



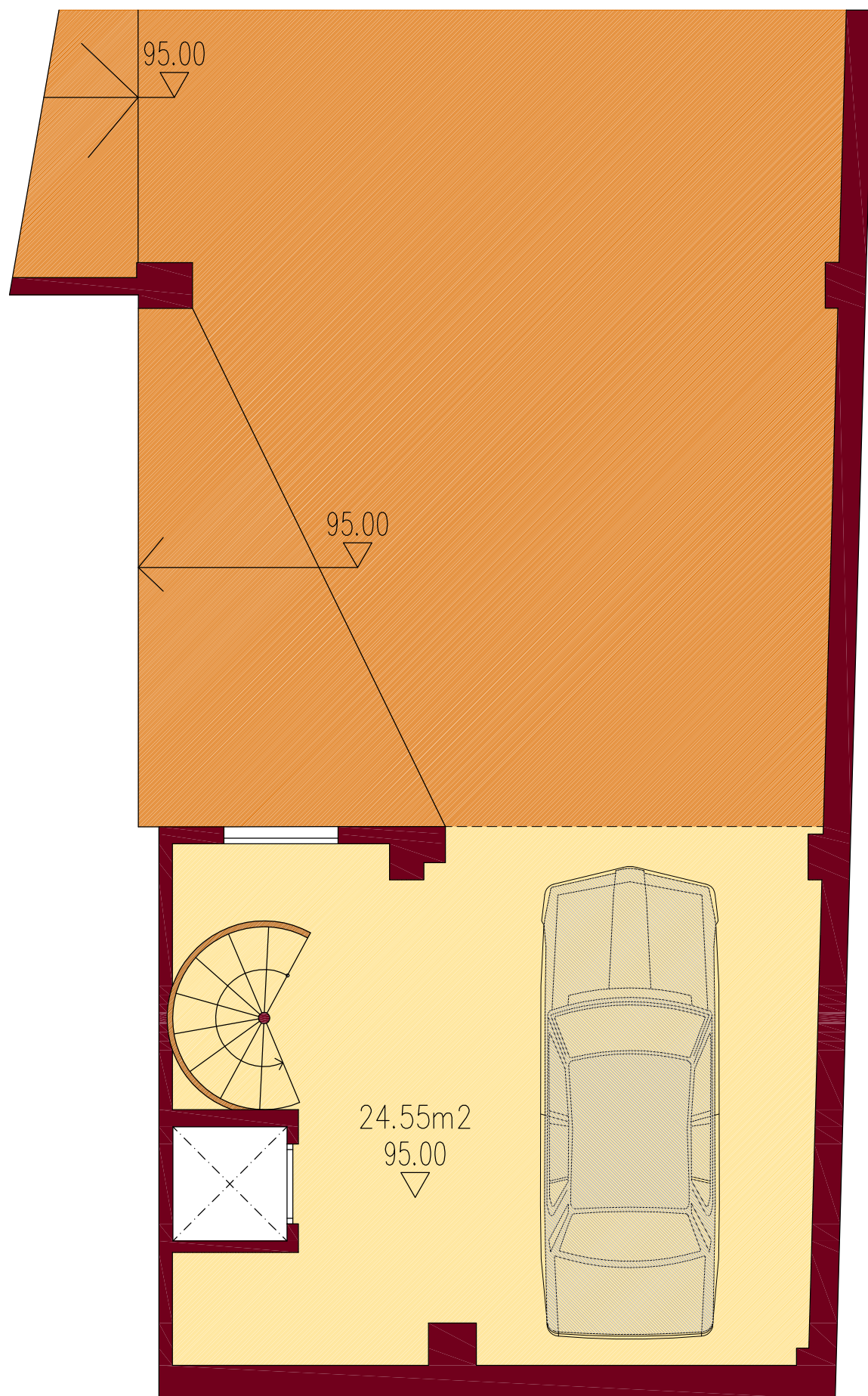
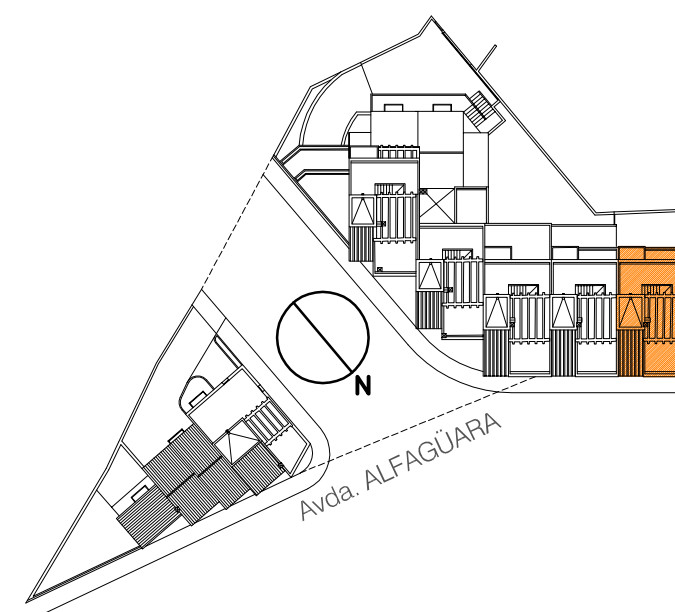
GRUPO INMOBILIARIO LUNA DE GRANADA®

Oficinas Centrales en C/ Méndez Núñez 7-9, 1º, 18003 GRANADA

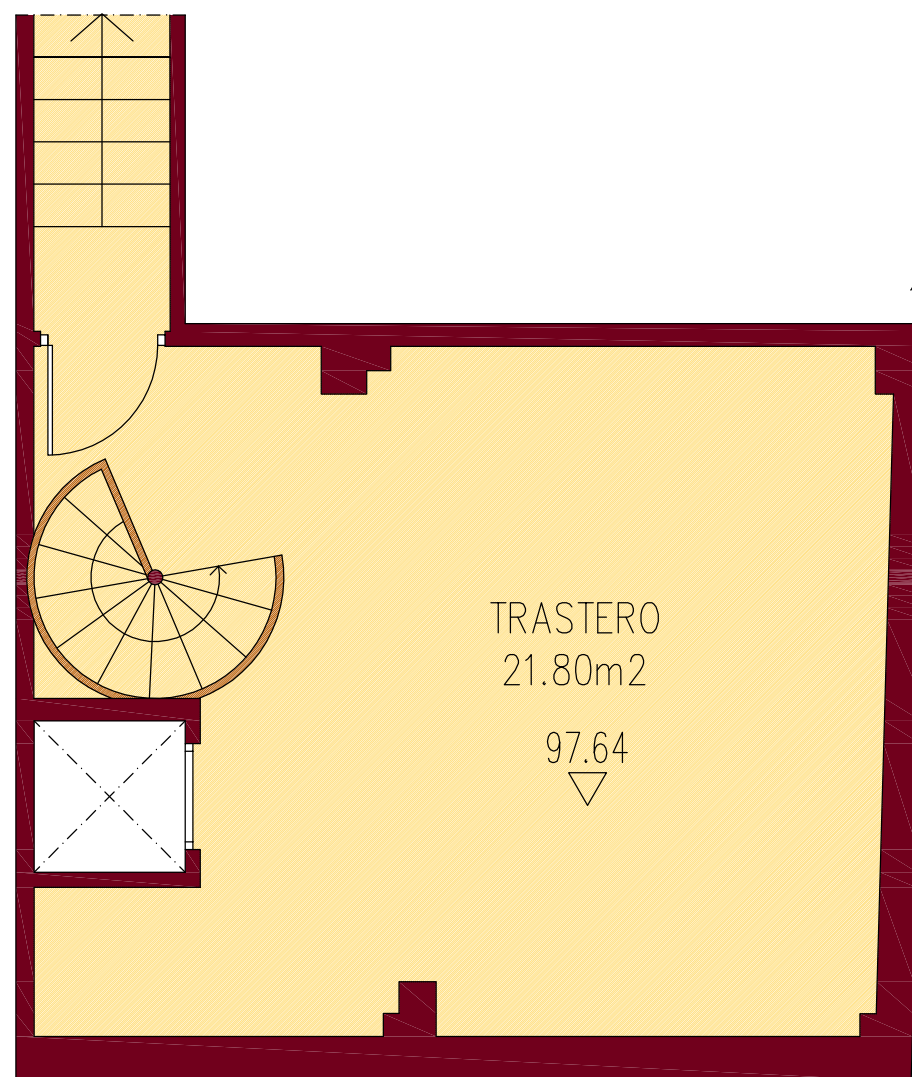
TLF/FAX: 958 201 010 - 958 274 561 - 958 204 109

www.ilunadegranada.com

infoa@ilunadegranada.com



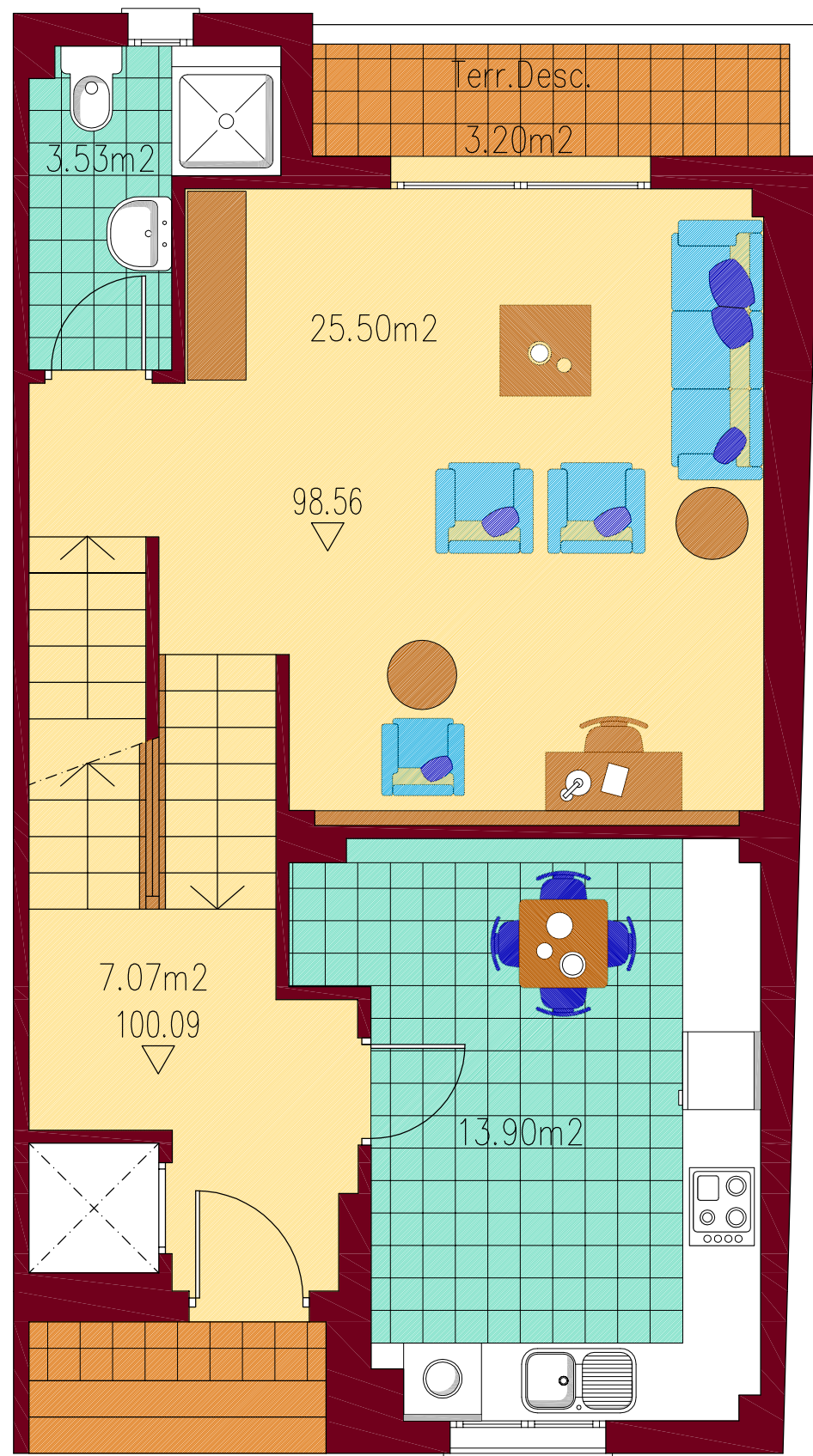
SOTANO APARCAMIENTO



SEMISOTANO

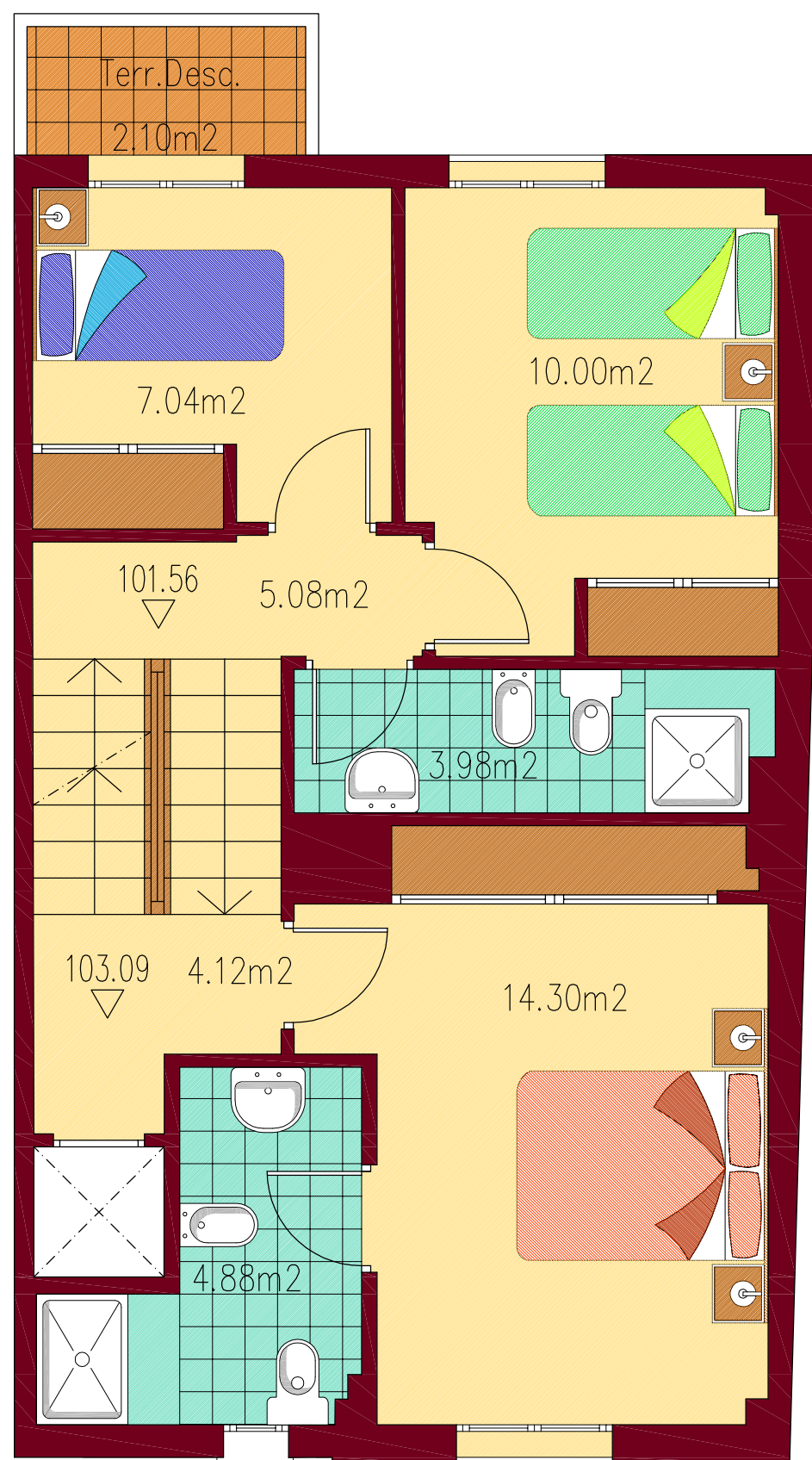
CUADRO DE SUPERFICIES

VIVIENDA Nº 1	SUP. UTIL	SUP. CONST
GARAGE	24.55m2	28.17m2
TRASTERO	21.80m2	25.80m2
PL. BAJA	50.00m2	59.70m2
PL.PRIMERA	49.40m2	60.26m2
TORRETA	1.70m2	2.60m2
SUP.TOTAL	122.90m2	148.36m2
TERRAZAS	42.40m2	

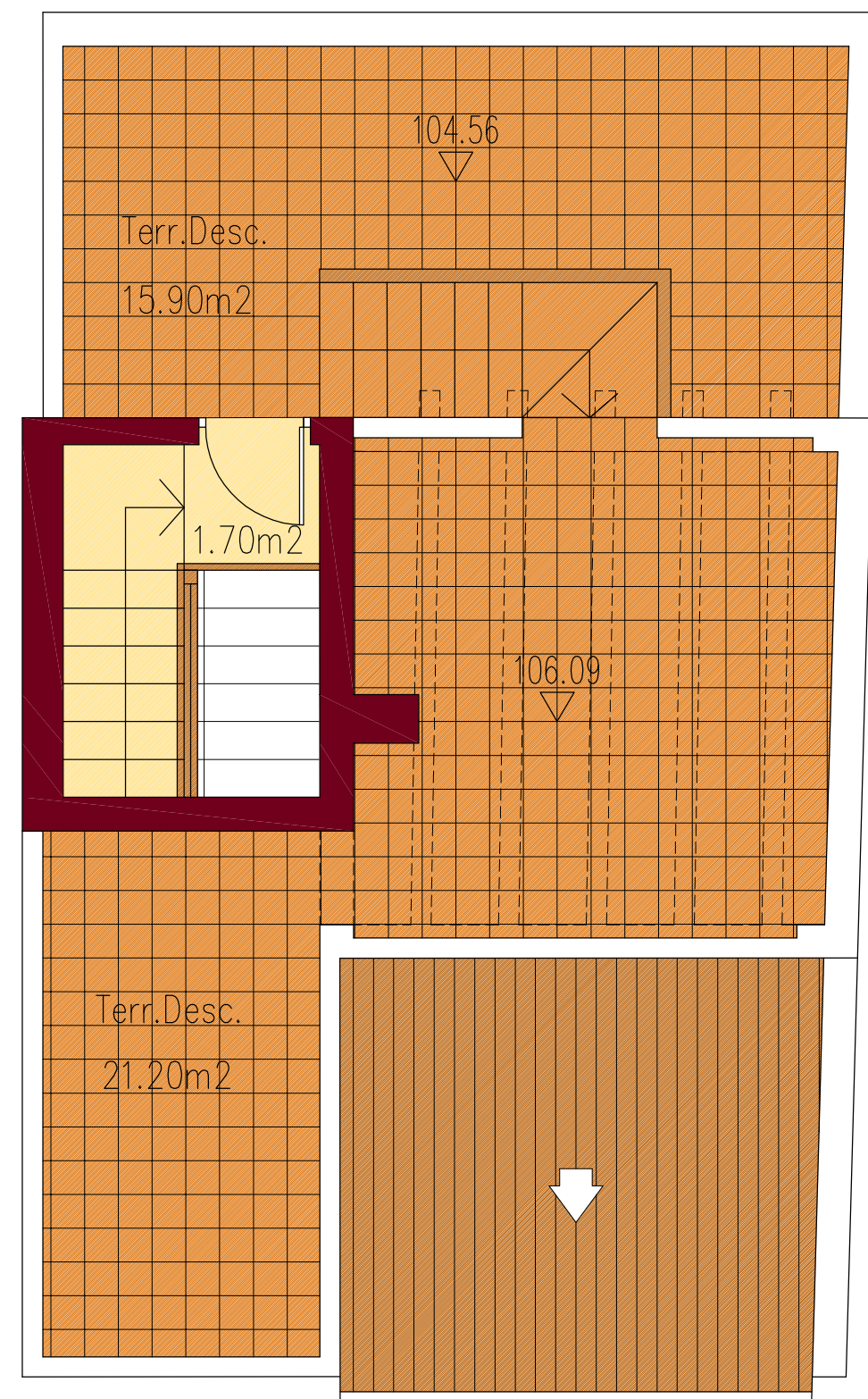


99494
▽ 1

PLANTA BAJA



PLANTA PRIMERA



PLANTA DE CUBIERTA